

YELLAX.COM

TYPICAL  MANAGER[®]
POWERED BY YELLAX

System requirements



YELLAX
HANDS-ON IMPROVEMENT

System requirements

Introduction

Typical Manager can be installed in three ways:

- Stand-alone
- Network server
- Workstation (client)

This document outlines the minimum system requirements necessary for using Typical Manager®. Adhering to these requirements ensures that your machine can support a basic installation of the software. However, the suitability of this configuration for your organization depends on several factors such as the number of projects, concurrent users, and performance expectations. It's also important to consider whether you are using a terminal server.

For optimal performance, we strongly advise using a 64-bit Windows operating system.

Additionally, to ensure data security, we highly recommend setting up an automated backup process to occur at least once daily.

Minimum requirements

Please note that the system requirements listed here represent the minimum specifications necessary for using Typical Manager®. We advise that you consider these requirements as a starting point, and ensure that your system meets or exceeds them for the best user experience.

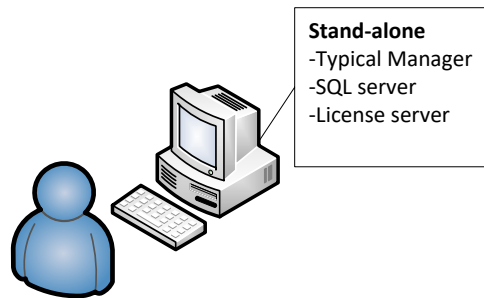
Meeting these minimum requirements does not guarantee optimal performance.

We recommend that you consider these specifications as the starting point and ensure that your hardware meets or exceeds them for the best user experience.

Using any other operating systems or databases may result in compatibility issues or system errors. It is recommended that you ensure that your software meets or exceeds these minimum requirements for optimal performance.



Stand-alone



To use Typical Manager®, your hardware must meet the following minimum requirements:

- Processor: Dual Core 2.4 GHz
- Memory: 8 GB (16 GB recommend)
- Disk space: 60 GB
- Monitor resolution: 1600 x 900
- Monitor scaling: 100%
- Internet connection is required.

The following software is required to use Typical Manager®:

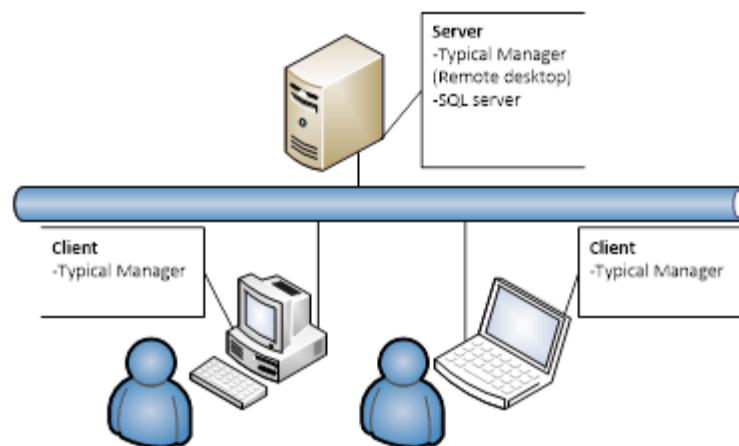
- Windows 11, Pro, Enterprise 64-bit¹
- Microsoft SQL Express 2019 / 2022²
- .NET Framework 4.8

WE RECOMMEND USING MICROSOFT OFFICE¹ AS IT PROVIDES THE BEST EXPERIENCE WHEN WORKING WITH EXPORTS SUCH AS XLSX AND DOCX FILES. WHILE OTHER SOFTWARE MAY ALSO BE USED TO OPEN THESE FILES, WE CANNOT GUARANTEE COMPATIBILITY OR OPTIMAL PERFORMANCE.

¹ MICROSOFT LICENSE REQUIRED

² PLEASE NOTE THAT ONLY ONE INSTANCE OF SQL EXPRESS MAY BE INSTALLED ON A MACHINE, AS MULTIPLE INSTANCES ARE NOT SUPPORTED. MORE DETAILS ABOUT THE RESTRICTIONS OF MICROSOFT SQL EXPRESS SEE WWW.MICROSOFT.COM

Client/Server



Server

To use Typical Manager®, your hardware must meet the following minimum requirements:

- Processor: Dual Core 2.4 GHz
- Memory: 8 GB (16 GB recommend)
- Disk space: 128 GB
- Monitor resolution: 1600 x 900
- Monitor scaling: 100%
- Internet connection is required

The following software is required to use Typical Manager®:

- Windows Server 2019, Enterprise 64-bit¹
- Microsoft SQL Server 2019 / 2022¹
- .NET Framework 4.8

Client

To use Typical Manager®, your hardware must meet the following minimum requirements:

- Processor: Dual Core 2.4 GHz
- Memory: 8 GB (16 GB recommend)
- Disk space: 60 GB
- Monitor resolution: 1600 x 900
- Monitor scaling: 100%
- Internet connection is required

The following software is required to use Typical Manager®:

- Windows 11, Pro, Enterprise 64-bit¹
- .NET Framework 4.8

WE RECOMMEND USING MICROSOFT OFFICE¹ AS IT PROVIDES THE BEST EXPERIENCE WHEN WORKING WITH EXPORTS SUCH AS XLSX AND DOCX FILES. WHILE OTHER SOFTWARE MAY ALSO BE USED TO OPEN THESE FILES, WE CANNOT GUARANTEE COMPATIBILITY OR OPTIMAL PERFORMANCE.